

Let your development team take control...

Trilogy Deployment Manager is a unique tool that allows your developers and testers to take control of their own deployments, enabling them to take code through the development lifecycle themselves, without the need for a specific "deployer" to make the deployments for them. The deployments are made in a simple and repeatable manner making the tool useful at all stages of the development lifecycle from coding through testing and all the way into production.

Uniquely *Deployment Manager* models your environments and can deploy different artifacts to different machines depending upon which target environment is selected. In addition to this, access control ensures that only those users with sufficient rights can deploy to each environment, thus protecting your test and production environments from accidental updates.

Deployment Manager can model almost any environment structure imaginable and can cope with having a different structure for different stages in the development lifecycle. For example:

- Development - One machine which is partitioned into database and application servers
- Testing - Two machines, one for the database and one for the application server
- Production - Three machines, one database and a pair of applications servers

Deployment Manager can easily deploy n-tier applications to multiple platforms in a single deployment. Deployments can be made to CA SCM agents or - when coupled with the CA SCM Remote Transport Interface - over FTP, FTPS or SSH. Protocols can be mixed within a single deployment. For example, consider a two-tier application with a Unix backend and a Windows client. A single deployment can then:

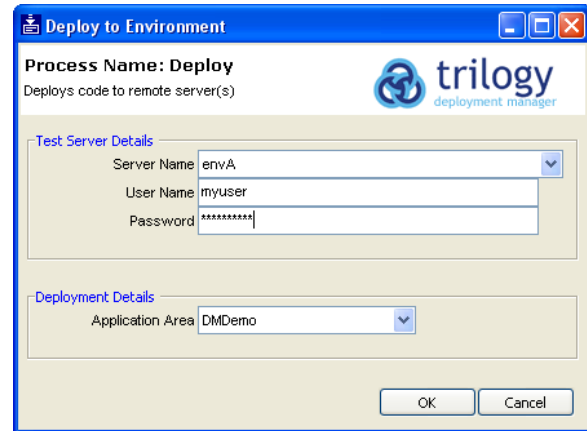
- deliver Unix code over SSH leveraging existing infrastructure
- deliver Windows code via a CA SCM agent

Deployment Manager can be invoked in a variety of ways, but most commonly it is run as a CA SCM UDP fronted by a customizable Trilogy Dialog. This provides a user-friendly mechanism for interacting with the tool and also allows additional information to be specified, such as ticking a checkbox to deploy debug binaries for example.

Deployment Manager is driven by an XML config file and comes with a graphical wizard to assist with building and managing the configuration. The config file allows you to create actions which contain conditional deployments as well as loops and re-usable deployment actions.

Easy Deployments with CA SCM UDPs...

Using *Trilogy* to front *Deployment Manager* with a dialog means that we can have a CA SCM UDP (User-Defined Process) that pops up a deployment dialog for the user to interact with before we start a deployment. When run in this manner the user's context is taken into account and they are only presented with a list of environments that are valid targets from the given context state.

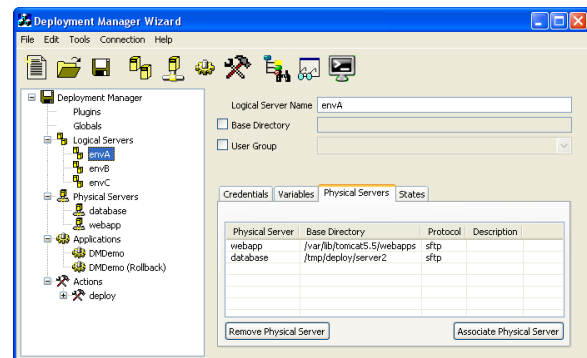


When the user clicks OK, *Deployment Manager* is invoked server-side by *Trilogy* and the deployment begins.

When run in this manner, the user's context can also be used to

Wizards make things happen...

Deployment Manager includes a wizard for creating config files so you can get going straight away. The wizard lets you model your environments and script your deployments without the need to learn the config file syntax, whilst still allowing you to express everything you could in a text editor. The wizard ensures that what you produce is syntactically correct, so that your deployments work as they should first time, every time.



The wizard comes as a cross-platform Eclipse plugin, allowing you to produce deployment configurations from within your development environment or it can even be used with the new Eclipse-based CA SCM Workbench.

Technical Support

Support is available via Trinem's Online Support System (OSS).

CA Partner

Trinem has been a CA Partner since 2001. Trinem has been an EMEA Partner of the Year, and are a preferred Partner within EMEA, working closely with CA's Development Labs in the USA.

Trinem Technology

Trinem has a number of products that compliment most SCM environments.

For more information on any of our products or services please visit us on the Web at: www.trinem.com



trilogy deployment manager

Model your environments...

Deployment Manager is unique in that it lets you model the physical structure of your environments. This means that not only is it flexible enough to handle almost any grouping of servers whatever their roles, but it can easily cope with having different structures for each environment and still use the same set of deployment rules to make the deployment.

Logical Servers, or environments, allow you to group together physical servers that work together. When you deploy to a logical server, all the physical servers receive the deployment in parallel. What they receive is controlled by the rules you define, so deployments can be conditional based upon the role of the server within that environment.

Physical Servers are conventionally representations of physical hardware, but they can be given more deployment-friendly names rather than having to refer to them by their, sometimes meaningless, hostnames. This naming also allows for more complex scenarios whereby a server is partitioned into two or more areas, allowing us to target deployments at just a part of a server.

Deployment actions operate on sets of servers. Initially we target all the physical servers in an environment - this means that all the servers will either receive the same deployment or have the same scripts run upon them. By defining roles for servers, we can pick the subset of servers which, for example, are running the database component and target just that subset to receive SQL updates. This makes for very simple rulesets which will work

Actions speak louder than words...

Deployment Manager has a rich set of deployment actions and control constructs, which are the essential building blocks through which deployments are scripted.

- Deployments to take items from SCM and drop them onto a server
- Remote script executions to run installers or apply the changes we deploy
- Conditional statements which either
 - change the subset of servers selected
 - or, act like traditional control flow statements
- Loops which executed actions repeatedly
- Variables which can be used in many ways
 - in conditions
 - to record results
 - to make lists for later iteration
 - as automatic counters
- Feedback so that the user knows what is going on

Deployment Manager Specification...

Supported Platforms¹
Windows (2000 and XP)
x86 Linux
Sun Solaris

Supported SCM Tools
CA Harvest 7.1
CA SCM R12

Supported Protocols
CA SCM/Harvest Agents
FTP (via CA Remote Transport Interface)
FTPS (via CA Remote Transport Interface)
SFTP/SSH (via CA Remote Transport Interface)

¹ Deployment Manager resides only on your SCM server. There are no components to install on your deployment targets unless you choose to use CA SCM/Harvest Agents as your protocol. Deployments can be made to most platforms including mainframe and midrange.

Technical Support

Support is available via Trinem's Online Support System (OSS).

CA Partner

Trinem has been a CA Partner since 2001. Trinem has been an EMEA Partner of the Year, and are a preferred Partner within EMEA, working closely with CA's Development Labs in the USA.

Trinem Technology

Trinem has a number of products that compliment most SCM environments.

For more information on any of our products or services please visit us on the Web at: www.trinem.com